

Sjælland Rundt 2020

Course Description

The Description is for Round Sjælland port side (north going start)

Course 1 Blue (Smaller boats with draft of max. 1.7m and max. Mast height of 20m):
Around Zealand through Bøgestrømmen. At Sjællands Odde you are allowed to sail through "Snekkeløbet", max. depth at normal water level 3.4m.
Sail west of Saltholm.
Distance: 216 Nm.

Course 2 Red (Larger boats with draft above 1.7m and mast height below 25.5m):
Around Zealand and Møn through Grønsund: At Sjællands Odde you are allowed to sail through "Snekkeløbet", max. depth at normal water level 3.4m.
Sail south of "Hestehoved Dyb Anduvning (approaches)".
Sail west of Saltholm.
Distance: 232 Nm.

Course 3 Green (Large boats with mast height above 25.5m):
Around Zealand, Lolland, Falster and Møn.
"Sjællands Rev Fyr" and "Gedser Landrev" southern marking must be rounded.
Sail west of Saltholm.
Distance: Approx. 276Nm.

SAILING RESTRICTIONS

Violation of the Sailing Restrictions may result in time penalty or in more severe cases disqualification.
All Sailing Restrictions are regarded as obstructions or course marks.
Observed violations will not be signaled.

CHANGES TO 'Limitations'

Limitations which have appeared since these provisions were printed will be displayed on the notice board. Changes of major importance will be notified at the registration (hand out of corrigendum).

TRAFFIC SEPARATION SCHEMES (rule 48.2)

A boat shall comply with rule 10, Traffic Separation Schemes, of the IRPCAS.
Sailing is prohibited in the separation scheme in the northern Øresund, the scheme at Hatter Barn (Route T), the scheme between Korsør and Sprogø and at Falsterbo Rev.

SUNDET NORD (northern Øresund) (all courses) (See section "Sundet, nordlige del" Fig. 13)

Traffic Separation Line W1 – W7 may not be crossed

Violations may at observation result in time penalty or in severe cases disqualification and possibly fines by authorities in the order of DKK 3000.- if the Coastguard is present in the area.

START AREA ('Startområde') Fig.1

The start area is positioned north of Helsingør harbour on the approx position N 56 04 58 E 12 34 05.

The area between the harbour and the start line is divided into 4 areas as seen on the map below.

All participants must follow the harbour controllers instructions on VHF from harbour to the start line.

NOBODY is allowed to sail into or leave the areas without permission from the controllers.

The controllers will call the individual boats when it is time to leave harbour and proceed to the start line.



Fig. 1 Start area

SJÆLLANDS ODDE (Course 3) Fig.2

Sjællands Rev Lighthouse is mark in the course.

SNEKKELOEBET (close to Sjællands Odde) (Course 1 and 2) Fig. 2

With Sjælland on the port side the red light buoy of Snekkeløbet (FL.R.3s) shall be kept on the port side.

With Sjælland on the starboard side the red light buoy of Snekkeløbet (FL.R.3s) shall be kept on the starboard side.

Boats with big draft shall not use Snekkeløbet.

Note: Passage through Bådeløbet is **not** allowed.

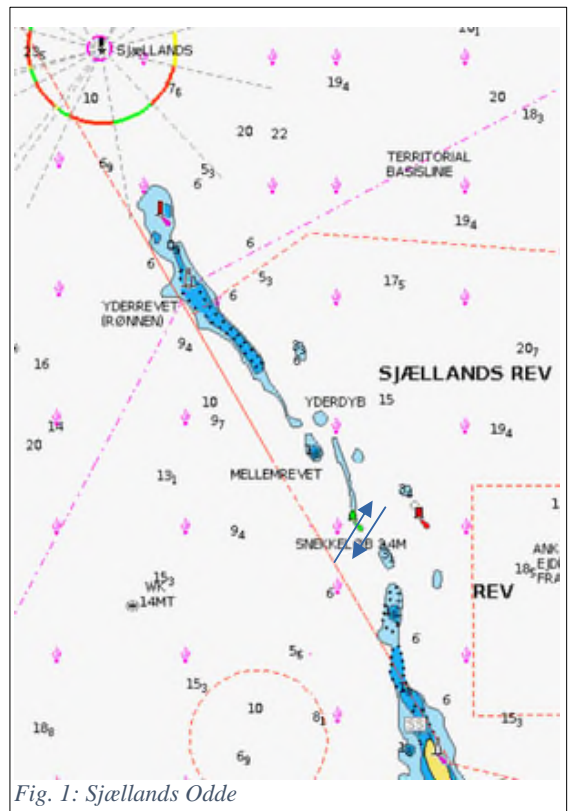


Fig. 1: Sjællands Odde

STOREBÆLT / SAMSØBÆLT (All courses) Fig. 3

Keep east of the Shipping Route T (Tango) in all Storebælt, Samsøbælt and Langelandsbælt and east of the line E18 – E20.

At Røsnæs Puller and until the traffic separation scheme keep east of the shipping route T, thereafter east of the sailing limitation line at the Storebæltsbroen (Great Belt bridge) as shown on fig. 4.

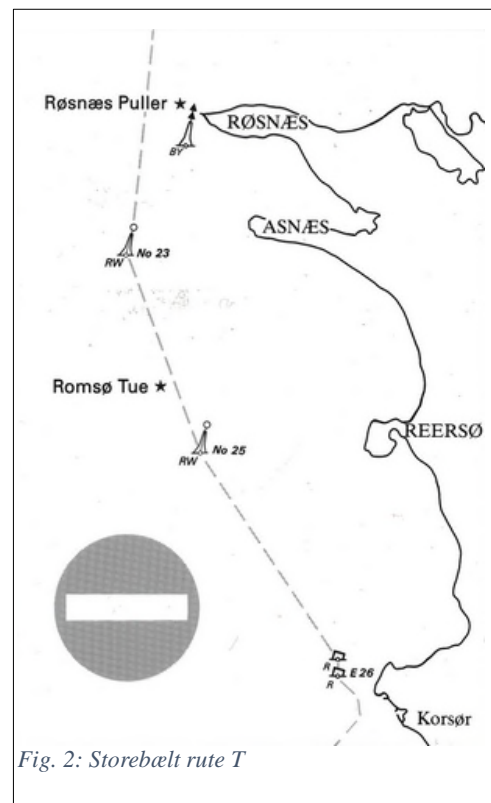


Fig. 2: Storebælt rute T

STOREBÆLTSMEN (Great Belt bridge) (All Courses) Fig. 4 og 5

Passage under the bridge must not happen more westerly than pillar No. 10 (see fig 5.) due to landfill.
 If the mast height makes this impossible then passage is allowed under a safe and justifiable span..

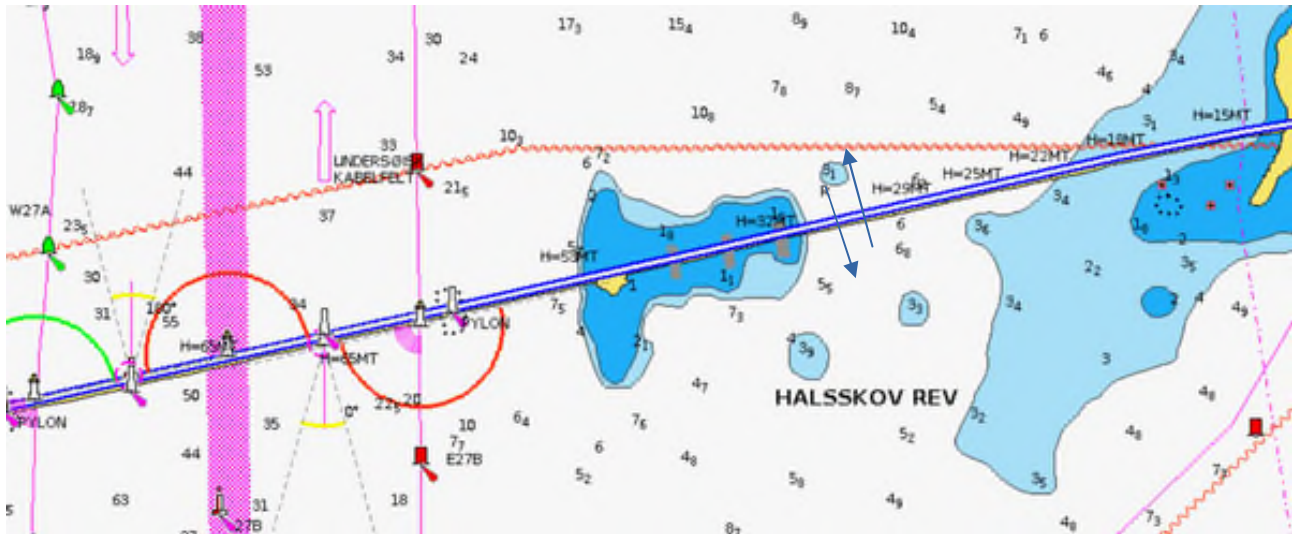
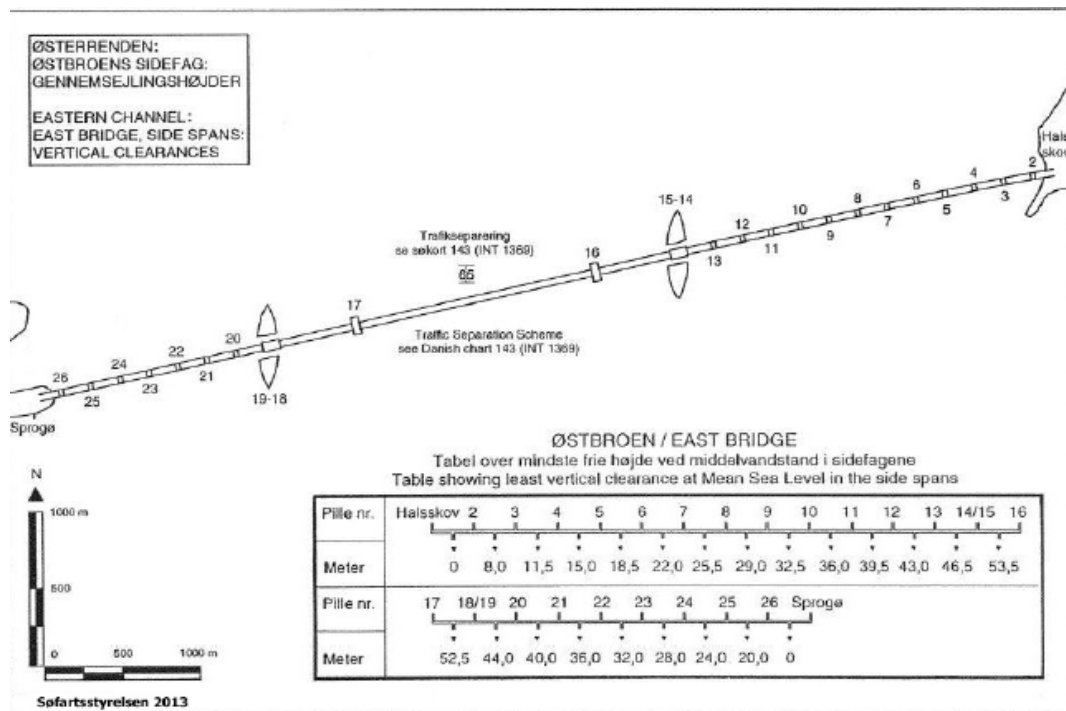


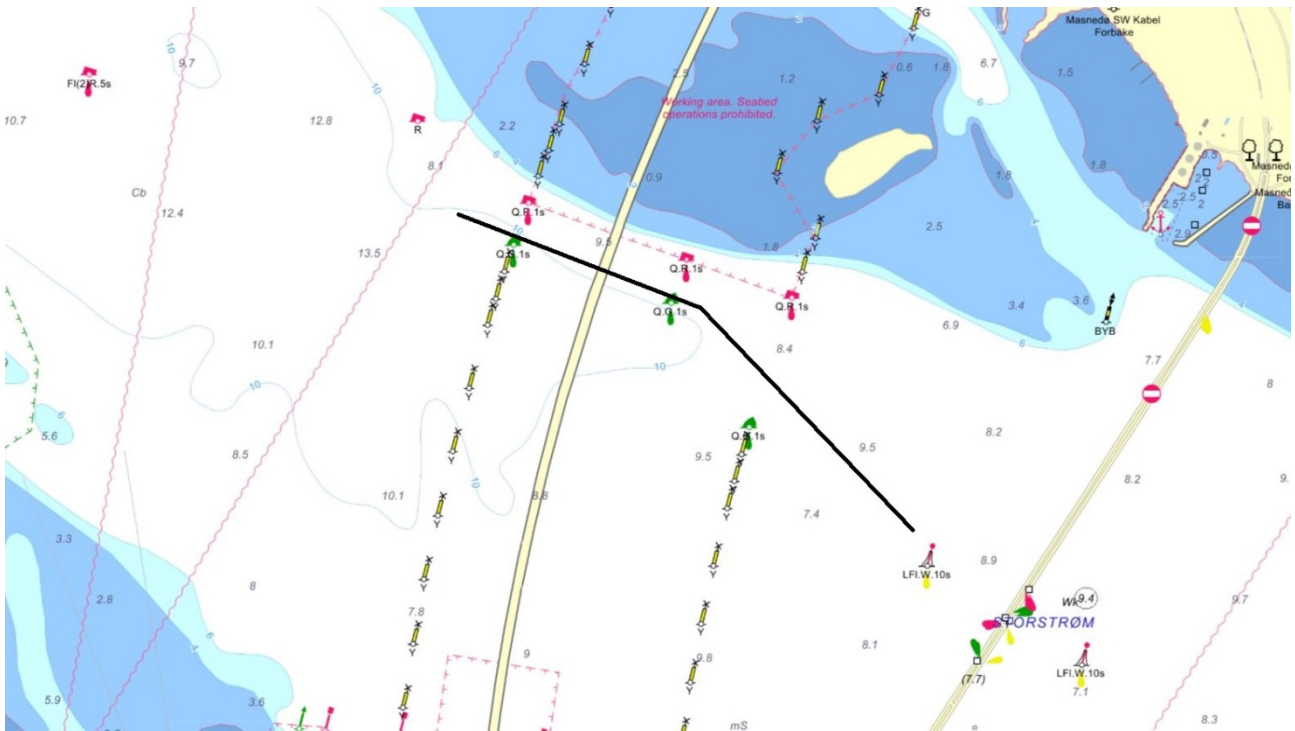
Fig. 3: Storebæltsbroen



Figur 5: Storebæltsbroen

Approach to Storstrømsbroen (course 1 and 2)

When approaching the bridge navigation must pass the construction area at the new bridge as shown on the following fig.:



STORSTRØMSBROEN (Storstrøms Bridge) (Course 1 og 2)

Sailing under the side spans is prohibited due to danger of falling pieces of concrete except for the passage span, 7th span from north, and through the southernmost span which have no danger of falling objects. The spans in question are marked with signs telling "PASSAGE ALLOWED".

FARØBROEN (Farø Bridge) (Course 1 og 2) Fig. 6

With Sjælland at port Course 2 must pass south of the marked passage span.

With Sjælland at starboard Course 2 pass north of the marked passage span.

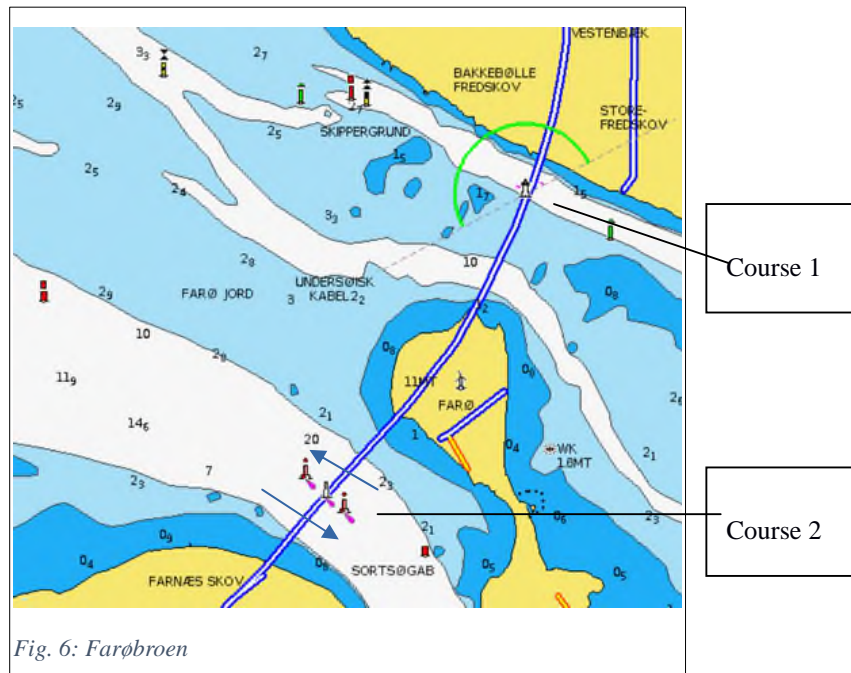


Fig. 6: Farøbroen

HESTEHØVED (Course 2) Fig. 7

All boats must pass south of Hestehoved Dyb Anduvning (Approach) (54°49,78' 12°11,36')

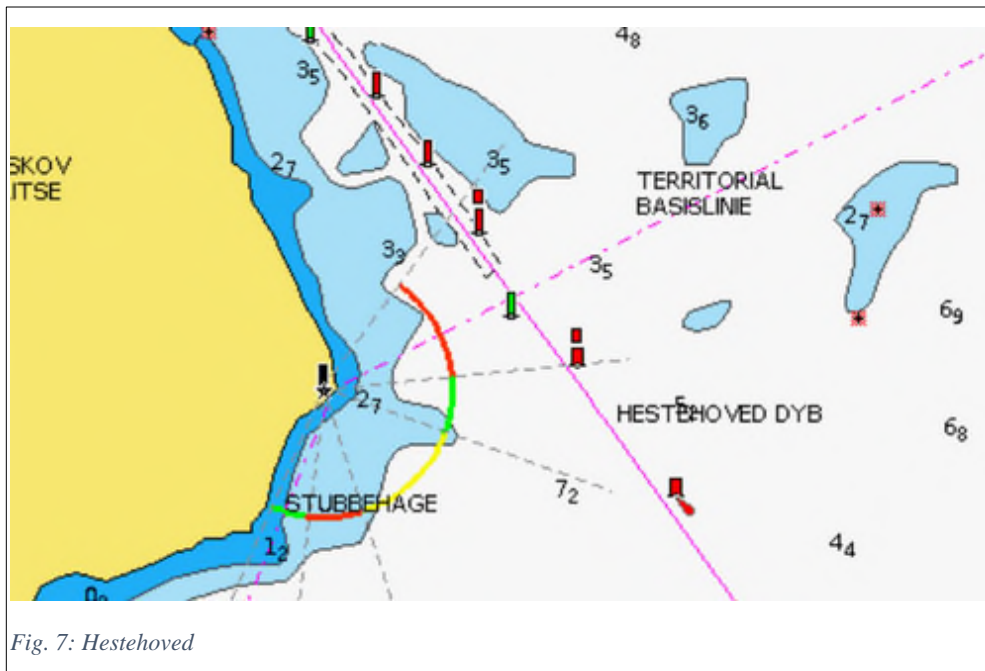
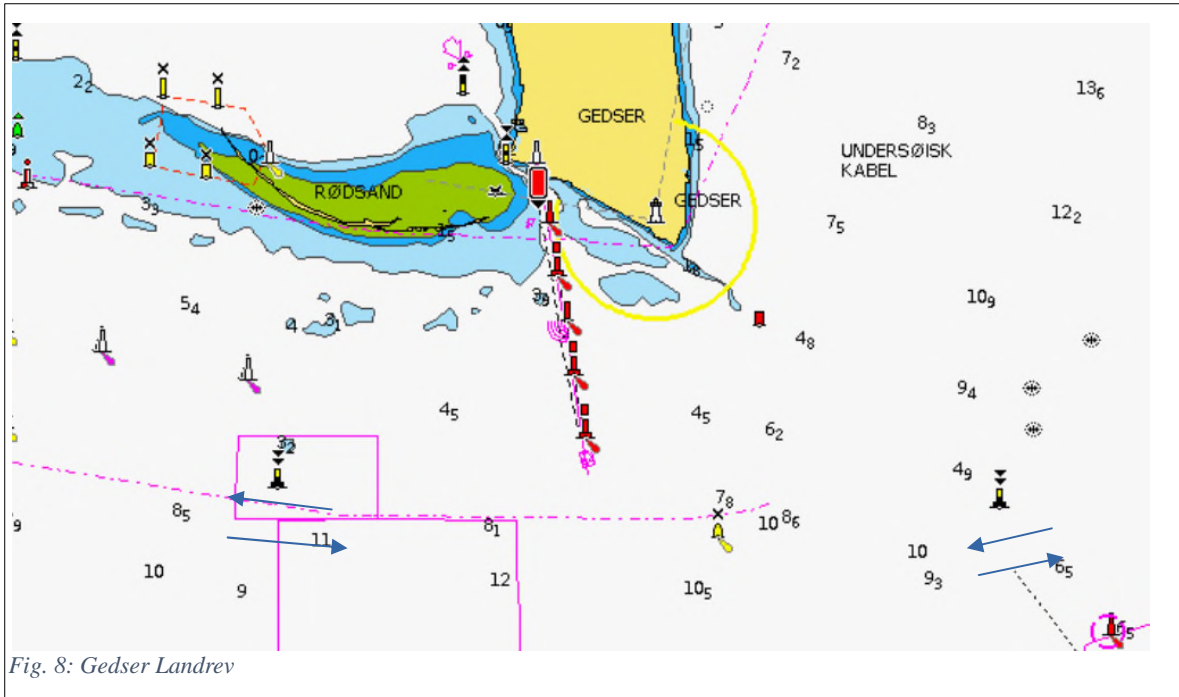


Fig. 7: Hestehoved

GEDSER LANDREV (Course 3) Fig. 8

South of the 2 south marks (YB)



STEVNS: (All Courses) Fig. 9

Sailing in the Traffic Separation Scheme (the roundabout) is prohibited.

Passage must be between following two positions: Pos1 55 17,5 N, 12 012,5 E, Pos2 55 18,2 N, 012 34,0 E

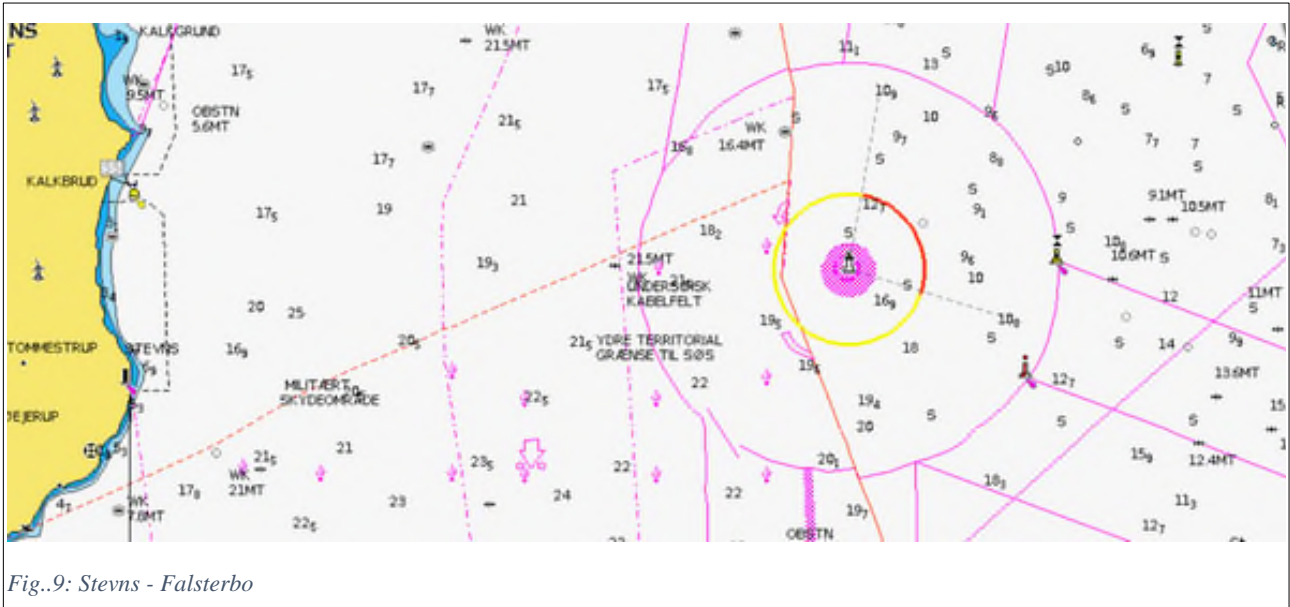


Fig.9: Stevns - Falsterbo

DRAGØR (All Courses) Fig. 10

SUNDET, southern part (All Courses)

All boats must pass west of Drogden Light house.

Hereafter passage must be through Kongedybet

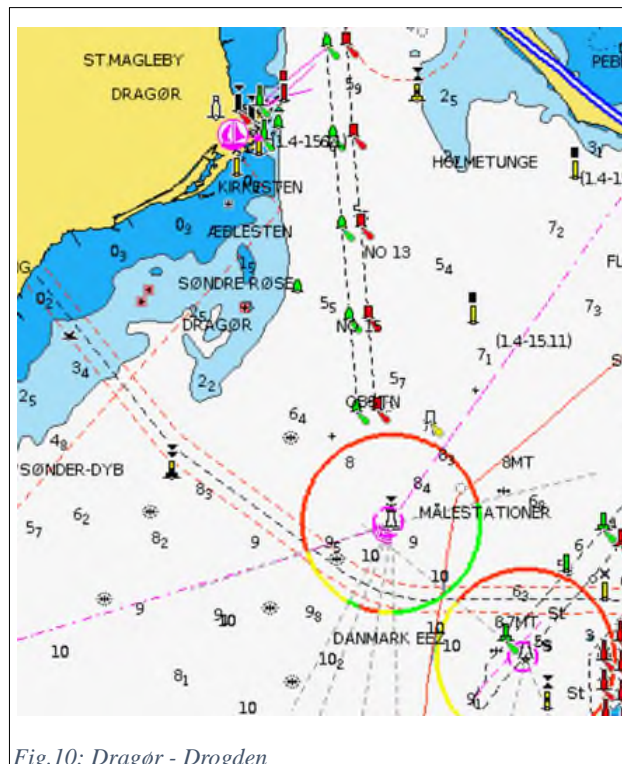


Fig.10: Dragør - Drogden

At Copenhagen Harbour (All Courses) Fig. 11

"It is recommended that pleasure crafts navigate east of the red line in the period 1st April to 15th November according to notes in the new navigation charts."

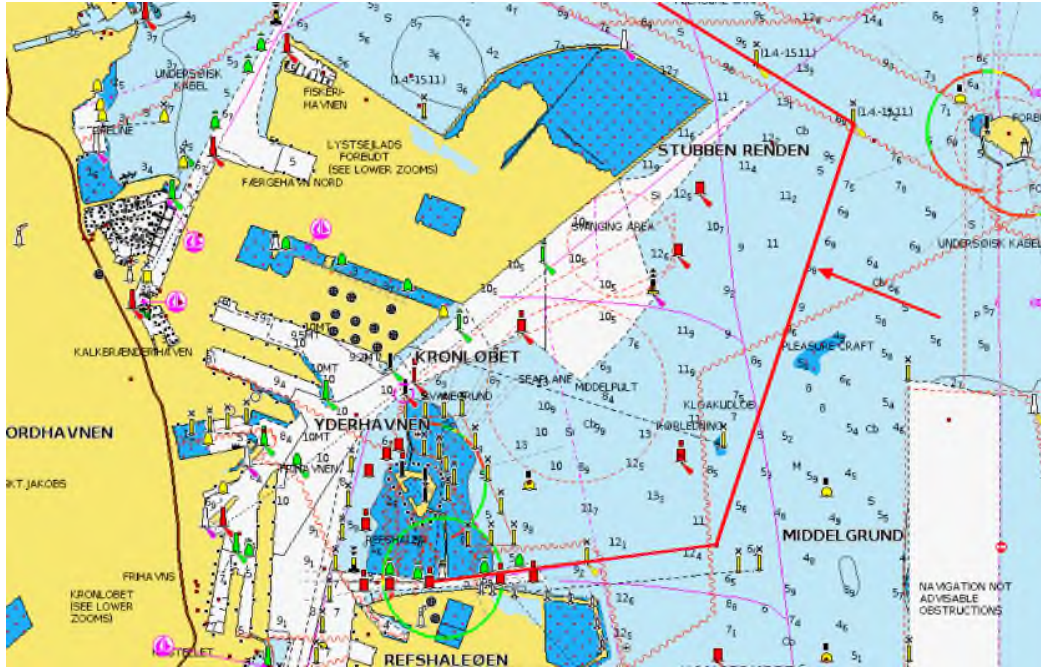


Fig. 11 Recommended Route

SUNDET, northern part (All Courses) Fig. 12

West of W7, W6, W5B, W5A, W5 and W4 and east of the prohibited area at the Ferry Berth and the Culture Harbour (see below)

Sailing in the Traffic Separation Scheme and close to the ends and in the Traffic Division Zone ('Trafikskillezone') is prohibited.

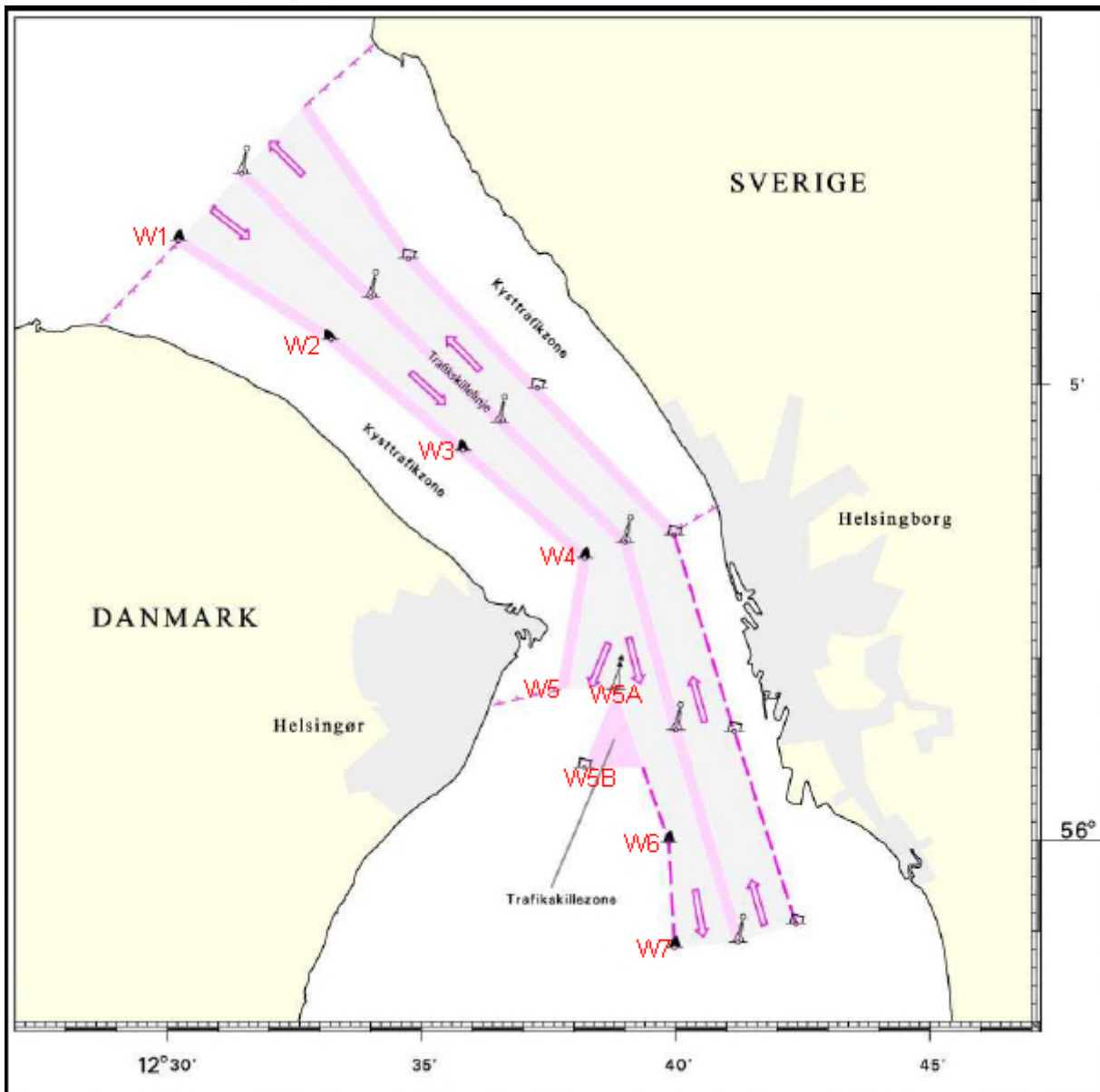


Fig. 12: Traffic Separation 'Sundet Nord'

HELSINGØR Havn Færgeleje Fig. 13

Due to the intense traffic a prohibition area has been established off the Helsingør Ferry Berth where unauthorized sailing with pleasure crafts is prohibited. The prohibition area is west of the limitation going due south from the Kronborg point and ending south of the Ferry Berths (marked on the charts).

Observed violation may result in 1 hour penalty, in severe cases disqualification. Control vessels may be in the area.

Likewise, the authorities may stop the boat with subsequent trial and penalty notices.

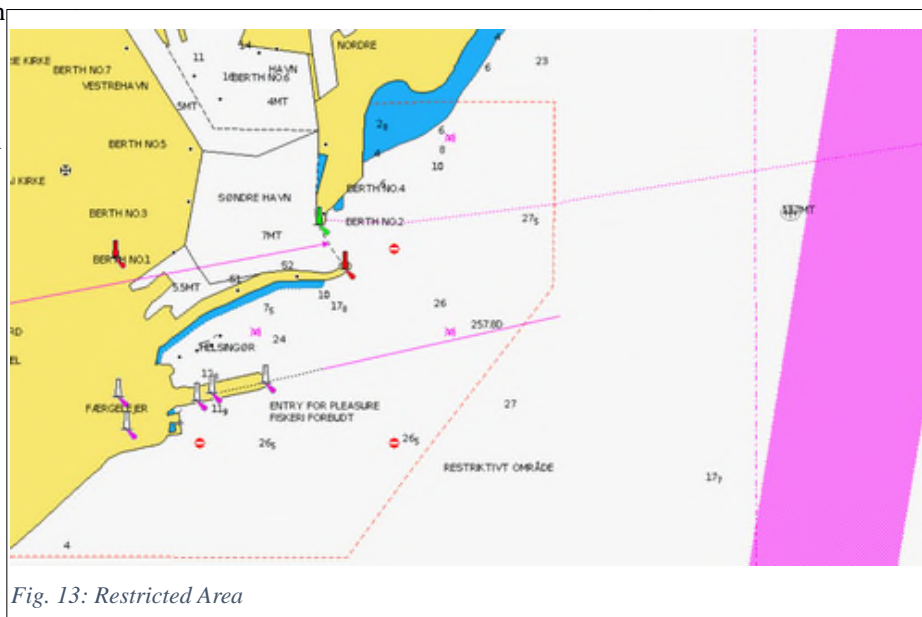


Fig. 13: Restricted Area

FINISH AREA/LINE (Remember to note in log book) Fig. 14

Between orange buoy deployed off Helsingør Nordhavn (yacht harbour) and the tower on the jetty flying orange and blue flag. At night the buoy will be equipped with white flash or be directly illuminated.

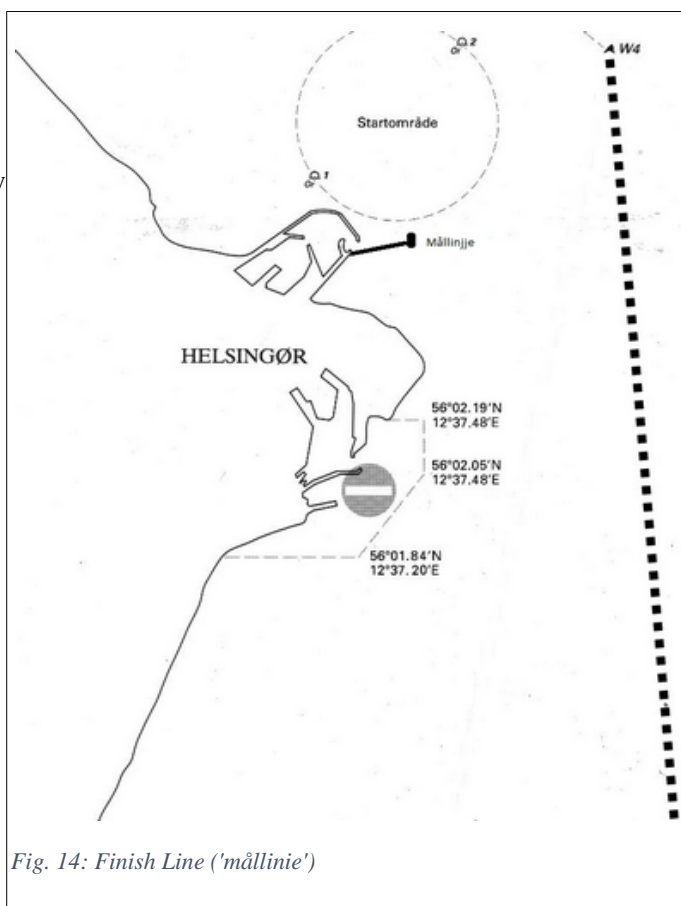


Fig. 14: Finish Line ('mållinie')